

abeplate Infinity Pro



Plancha CTP Térmica

INFINITY PRO es una plancha térmica positiva de alta resistencia química en máquina de imprimir.

La plancha **INFINITY PRO** ha sido diseñada para ofrecer al impresor una excelente productividad en pre-impresión y elevada tirada en máquina de imprimir sin necesidad de post-horneado.

Con una alta sensibilidad en la grabación y resolución de copia, reproduce hasta 20µm en trama estocástica -FM.

INFINITY PRO es adecuada para la impresión de un amplio rango de aplicaciones sea con tintas UV, metálicas o convencionales sin necesidad de post-horneado.

- Elevada sensibilidad/alta productividad.
- Alta estabilidad en la reproducción tonal.
- Largas tiradas en máquina de imprimir sin post-horneado.
- Resistente a tintas UV y solventes.
- Bajo consumo de revelador y regenerador.
- Alta compatibilidad con otros reveladores.

Thermal CTP Plate

INFINITY PRO is a positive working thermal plate with high chemical resistance on press.

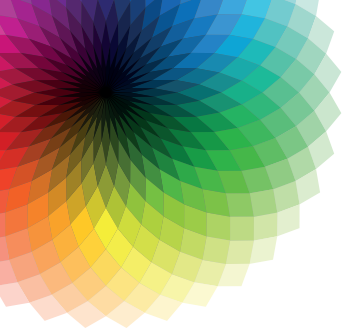
INFINITY PRO plate has been designed to provide the printers excellent productivity in pre-press and high run-length without the need for post-baking.

With high sensitivity and resolution, is suitable to reproduce up to 20 µm FM stochastic screen.

INFINITY PRO is suitable for a wide range of printing as packaging with or without UV ink, metallic or conventional inks, without need for post-baking achieving long run lengths.

- High sensitivity/high productivity.
- High stability in tonal reproduction.
- Long runs on press without post-baking.
- Resistant to UV inks and solvents.
- Low consumption of developer and replenisher.
- High compatibility with different developers.

Infinity Pro



Technical specifications

Type	Positive working thermal
Substrate	Electromechanical grained and anodized aluminium
Coating Color	Blue
Plate Gauges	Standard: 0,15 - 0,30 mm / On request: 0,20 - 0,25 - 0,40 mm
Application	Sheet-fed and Coldset / Heatset web presses
Laser Characteristics	IR - Infrared laser
Spectral Sensitivity	800-830 nm
Energy Required	100-110 mJ/cm ²
Screen Reproduction	1 - 99% @ 400 l.p.i.
Resolution	Up to 5080 d.p.i. and FM screen 20 µm
Safelight	Daylight handling
Development	Use Abezeta developers and replenishers
Processing Conditions	Temperature: 23 ±1° C Dev. Time: 30 ±5 seconds
Finishing Gum	Use Abezeta Gum for standard process
Run Length	150.000 impressions – UV ink 400.000 impressions – Conventional ink
Shelf Life	18 months
Storage Conditions	Temperature: Up to 30° C Relative Humidity: Up to 70%



abezeta

YOUR GLOBAL PARTNER

València, 348

08009 Barcelona (Spain)

Tel. +34 934 574 504 / +34 932 075 022

info@abezetagroup.com

www.abezeta.es